

## Quick Questions 2 Summarizing Data

I. Place the number of the appropriate formula or phrase next to the item it describes.

- A. Mutually-exclusive events 2
- B. Relative frequency 4
- C. Class midpoint 3
- D. Approximate class width 1
- E. All-inclusive events (collectively exhaustive) 6
- F. Ogive 5

II. Complete the following using this data.

Data: 38, 48, 27, 14, 31, 23, 46, 38, 54, 26, 44, 33, 17, 34, 6, 37

A. Array: 6, 14, 17, 23, 26, 27, 31, 33, 34, 37, 38, 38, 44, 46, 48, 54

B. Range  $R = H - L = 54 - 6 = 48$

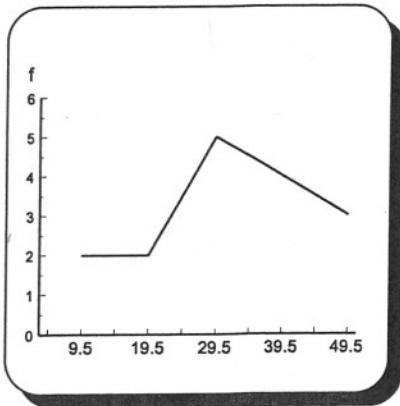
C. Approximate class width

$$\frac{\text{range}}{\# \text{ of classes}} = \frac{48}{5} = 9.6 \rightarrow 10$$

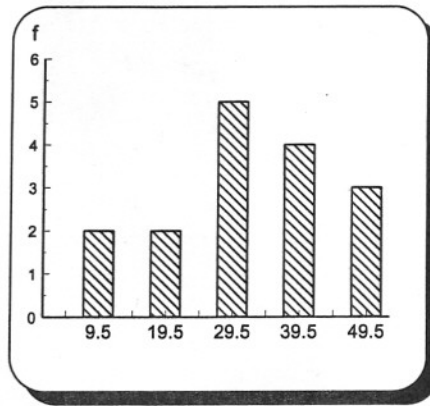
D.

Frequency Distribution						
Stated Class Limits	Real Class Limits	Tally	Frequency (f)	Relative Frequency $f \div n$	Cumulative Frequency	
					More-than	Less-than
5 - 14	4.5 - 14.5		2	0.1250	16	0
15 - 24	14.5 - 24.5		2	0.1250	14	2
25 - 34	24.5 - 34.5	HHH	5	0.3125	12	4
35 - 44	34.5 - 44.5		4	0.2500	7	9
45 - 54	44.5 - 54.5		3	0.1875	3	13
Total frequency (n)			16	1.0000	0	16

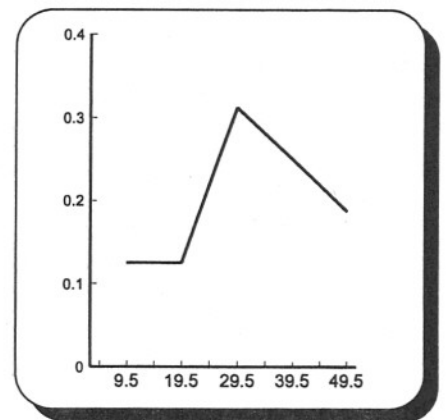
E. Frequency polygon



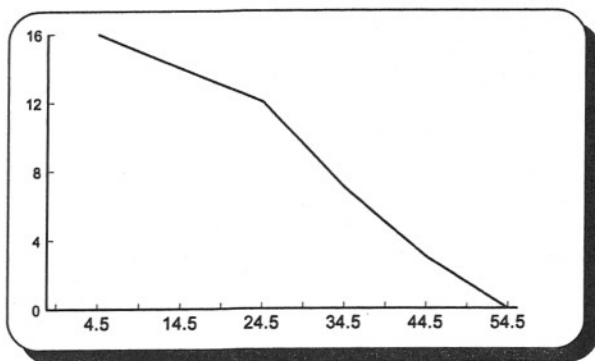
F. Histogram



G. Relative frequency polygon



H. More-than cumulative frequency polygon



I. Less-than cumulative frequency polygon

