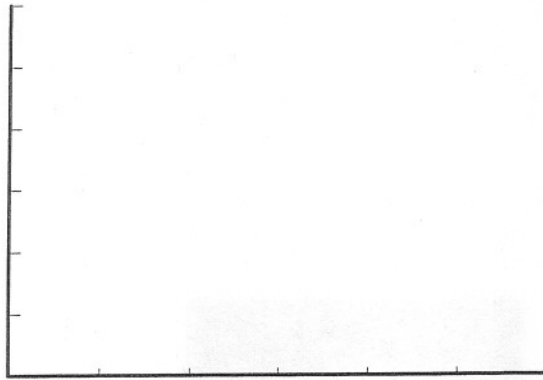


IV. Draw a frequency polygon for the question III data and locate the mean, median, and mode.

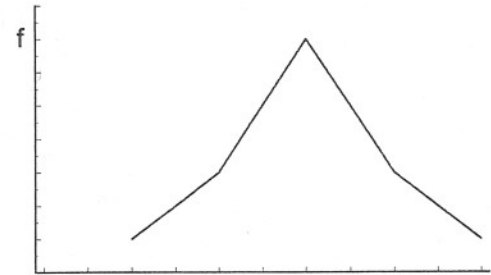
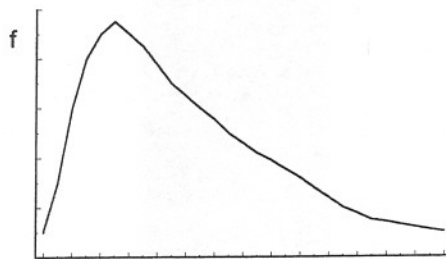
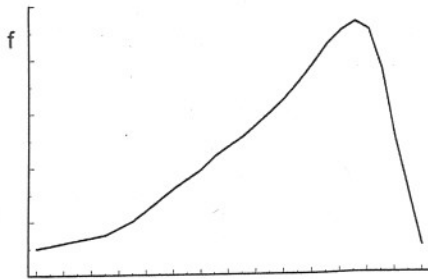


V. Show the approximate location of the mean, median, and mode on the x-axis of these frequency distributions.

Curve #1

Curve #2

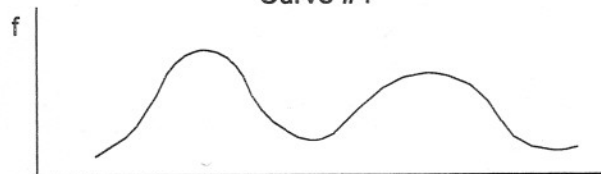
Curve #3



VI. Answer these questions using Curves #1 to #4.

- A. Curve #1 is skewed to the _____.
- B. Curve #3 is not skewed and is said to be _____.
- C. Curve #4 is _____.

Curve #4



- D. You represent a union and data indicates member salaries are distributed similar to Curve #1. Which measure of central tendency would you use when talking to local media about current wage negotiations? _____
- E. Using the mean of 77.8 and the median of 79.5 from page 26, calculate Pearson's coefficient of skewness. The standard deviation, which will be calculated on page 32, is 14.2.